

Description

Introduction

The **UWE Wire Control** is used for manual control of the flow rate through one or more heater packs, primarily for heat control of defroster and overhead heating units in buses and coaches.

Design

The assembly consists of a valve, which is either 2-way or 3-way, and a wire to enable transmission from the operating unit to the valve.



Figure: Manual wire control

Technical Data

Specifications

Valve 2- and 3-way wire-controlled

Max. operating pressure	10 bar
Max temp.	110 °C
Max. differential pressure	200 kPa
Torque	3Nm (max)
Stroke	40mm

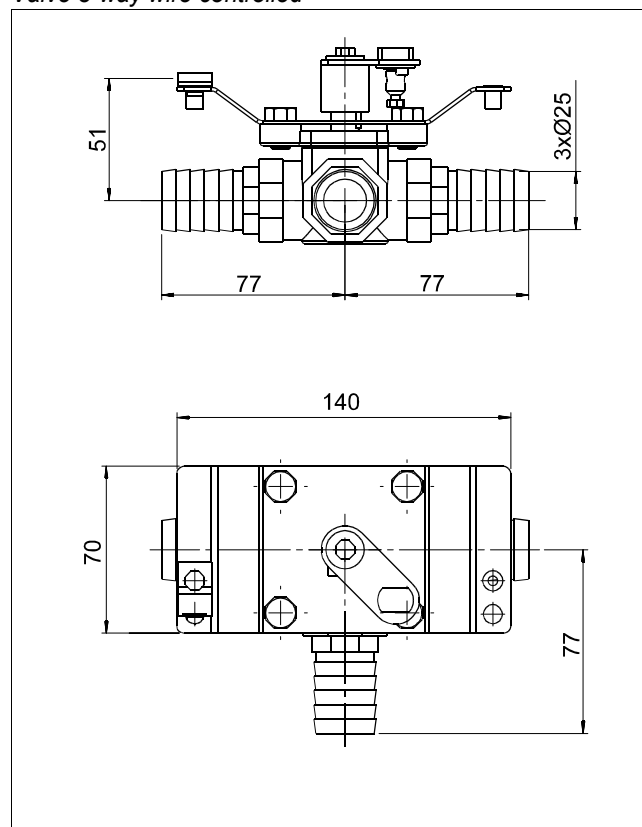
Materials

Valve 2- and 3-way wire-controlled

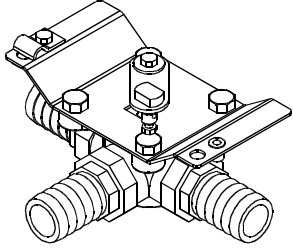
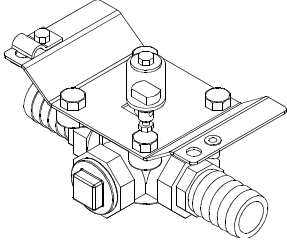
Valve body	Brass
Shaft & slide	Brass
Hose connection	Brass
Bearing	PPO
Motor mount	Zink
O-rings	EPDM (dim. 11,91x2,62)
Wire control	Galvanized steel

Installation Dimensions

Valve 3-way wire controlled



Products

Description	Part No.
Valve 3-way wire controlled Ø25	13759
	
Valve 3-way wire controlled Ø28	13805
Valve 2-way wire controlled Ø25	13808
	
Valve 2-way wire controlled Ø28	13809
Wire plastic-coated Ø5 <i>Sold by the metre</i>	11873

UWE Verken AB
Box 262
S-601 04 Norrköping, Sweden
Phone +46 11 24 88 00
Fax +46 11 12 47 04
www.uwe.se

